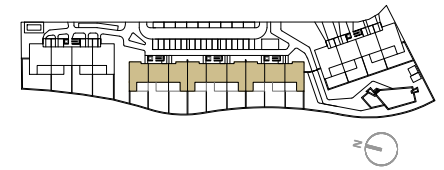


# RESIDENCIAL AZURE IV

LO ROMERO GOLF - PILAR DE LA HORADADA



## VIVIENDA TIPO V.94

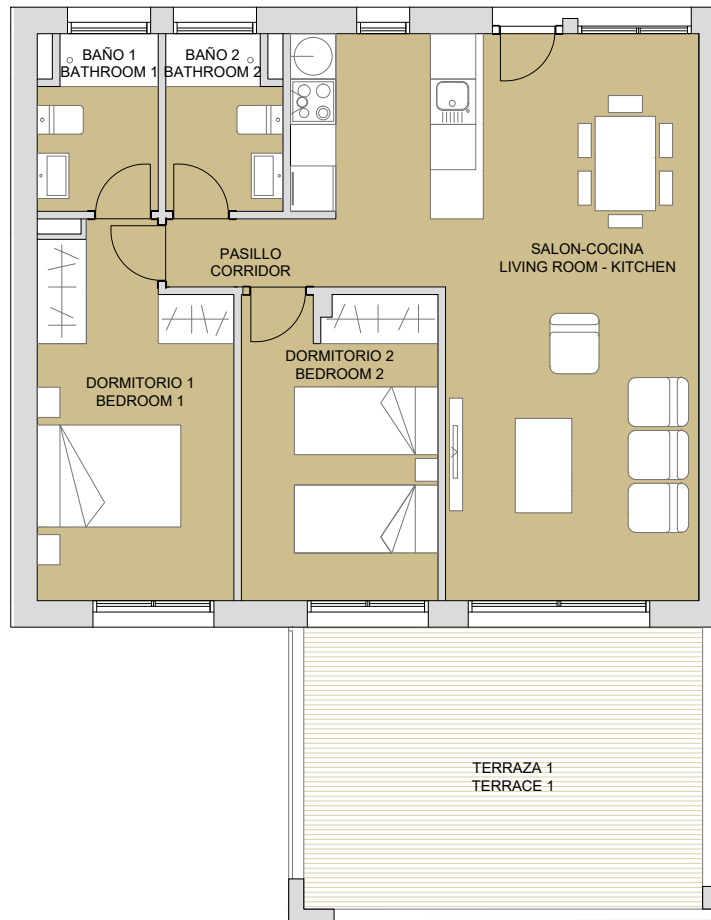
SUPERFICIES ÚTILES / OCCUPIABLE AREA

LIVING ROOM - KITCHEN	31.90 m2
PASO / CORRIDOR	1.50 m2
DORMITORIO 1 / BEDROOM 1	12.10 m2
BAÑO 1 / BATHROOM 1	3.55 m2
DORMITORIO 2 / BEDROOM 2	10.45 m2
BAÑO 2 / BATHROOM 2	3.40 m2

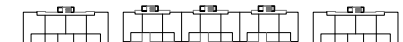
TERRAZA 1 / TERRACE 1	22.00 m2
-----------------------	----------

SUPERFICIES CONST. / BUILT AREA

SUP. CERRADA / CLOSED AREA	74.70 m2
CLOSED AREA + TERRACE	96.70 m2



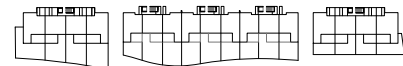
PLANTA SEGUNDA



PLANTA PRIMERA



PLANTA BAJA



CONTACT: 0034 650 834 472  
info@binomiumproperties.com  
www.binomiumproperties.com

PLAN SUBJECT TO POSSIBLE MODIFICATIONS FOR TECHNICAL OR LEGAL REASONS. THE MEASUREMENTS SHOWN ARE APPROXIMATE  
PLANO SUJETO A POSIBLES MODIFICACIONES DE INDOLE TÉCNICA O JURÍDICA. LAS SUPERFICIES SON APROXIMADAS

